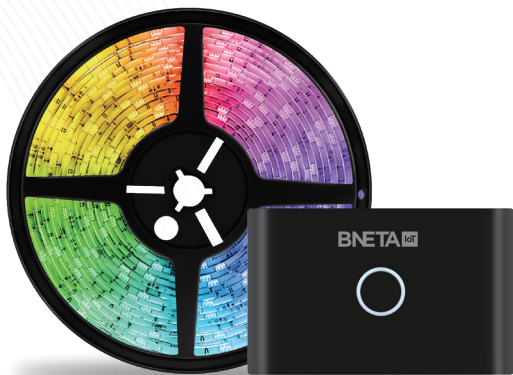


BNETA IoT

Immersion TV Backlight with HDMI Sync Box

USER MANUAL



works with the
Google Assistant



WORKS WITH
amazon alexa

BNETA International
sales@bneta.co.za
www.bneta.co.za

GOOD TO KNOW

- The control box supports 4K/60 (HDMI2.0 standard); 4K/120/8K60 (HDMI2.1 standard) (optional) input. If you need to use it to display a higher level signal input source, you can use the HD video selector switch box to convert it for multiplex input.
- You can power it back on (including the HD signal source) to restore factory Settings so that you can start over in the event of any problems or failures with the connection.
- After you sign in to your voice assistant's account, you can control the switch through voice control. We recommend keeping items in a dry and ventilated place, away from damp or humid environments.
- It is normal for the control box to get hot after a few hours of operation.
- If it is not used for a period of time, unplug the power adapter in time.

INTRODUCTION

The HDMI synch box lighting kit synchronises the lighting with the content on the TV screen, creating an amazing entertainment atmosphere. You can utilise multiple sources of your favourite HDMI-connected media devices, such as PlayStation PS5 or PC, to generate lighting effects throughout the room, enhancing the lifelike and engaging nature of your TV or game content. This provides you with a completely immersive experience when watching movies or playing games, transporting you into a wonderful visual and auditory feast. It is a must-have for fans of watching movies, listening to music, and playing games.

SPECIFICATIONS

Power Voltage	12V
Max Power Consumption	36W
Lighting Colour	RGB, 16 Million Colours
Control Method	App / Manual / Voice
Wireless Type	WiFi 2.4G / Comprehensive Simulation 2.4G
Video Resolution	Up to 4K/60
Sound Synching	Supported

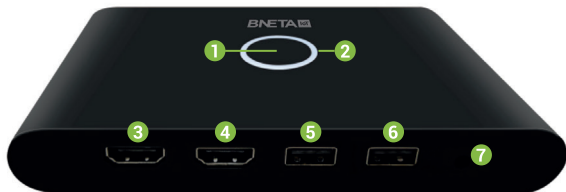
PACKAGE INCLUDES

1 x Light Strip | 1 x (30LED/M; 60LED/M) Adapter | 1 x HDMI Cable | 1 x (HDMI2.0/HDMI2.1) User Manual | 1 x Control Box

BEFORE USE

Please learn each function of the control box.

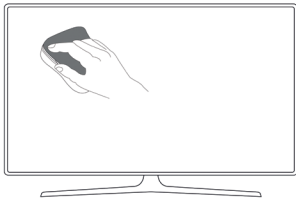
Note: WiFi connection status indicator, light on indicates that the App has been connected and works normally; The flash means light strip App is connected.



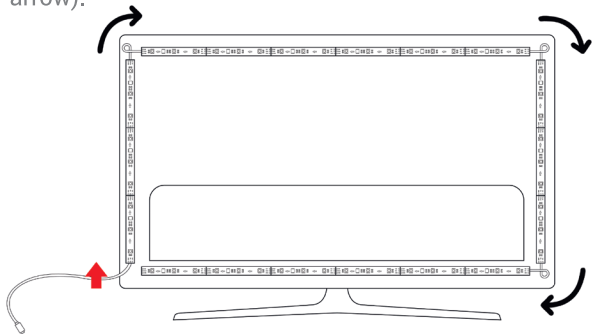
1. Clear the APP Connect button
2. WiFi connection status indicator
3. HDMI In
4. HDMI Out
5. USB lamp post interface
6. USB light strip interface
7. DC interface

INSTALLATION STEPS

1. Wipe the back of the TV with a dry towel to keep it clean and dry.



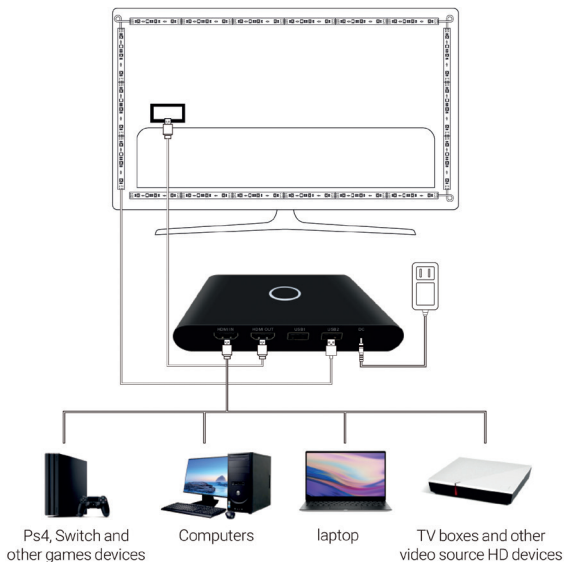
2. Facing the back of the TV, select the clockwise mounting direction. Please note that it is the specified installation location. There can be no other mounting position (see red arrow).



Lower Left Clockwise direction

2. Install the HDMI sync box lighting kits, LED light strip. Connect the HD signal source through the HDMI input/output port and turn on the power to the HDMI sync box. Note: After installation, plug in the power supply. When the white light around the circle flashes, normal use is indicated.
- Input port -- HDMI2.0 cable -- PS4, Switch and other game devices/computers/laptops/TV boxes and other HDMI signal devices.
 - Input ports -- HDMI2.1 cable -- PS5, Switch and other game devices/computers/laptops/TV boxes and other HDMI signal devices (optional)
 - Output port - HDMI2.0 cable - TV, projector or monitor screen.
 - Output port -- HDMI2.1 cable -- TV (requires HDMI2.1 standard TV or monitor), projector or monitor screen (optional).
 - DC port -12V/24V power adapter.

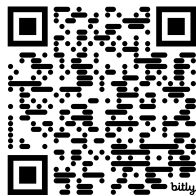
- USB port "light strip". Please insert LED light strip.
- USB port "lamp post". Please insert LED lamp post (optional).



APP CONTROL

DOWNLOAD THE FREE BNETA IoT APP

Scan the QR code and install our free app for either iOS or Android. Once downloaded, the app will ask you to register your device. Enter your email and select your country of residence.

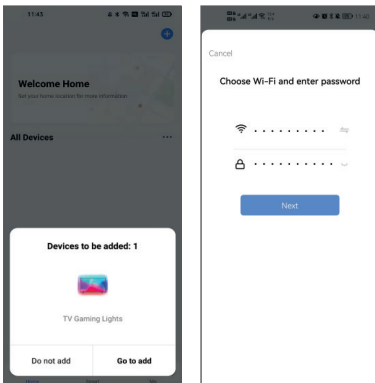


When you choose to register with your email address, you will need to create a password.

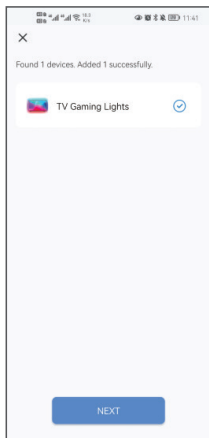
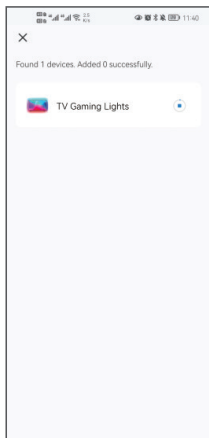
Please note: There are two mode configurations (Bluetooth Mode/Quick Mode) available for you to choose from to add the device to the app. Bluetooth Mode is recommended. You will need to turn on your phone's Wi-Fi, Bluetooth, GPS first.

BLUETOOTH MODE CONFIG (COMMON)

1. Turn on your phone's Bluetooth after the Smart Synch TV Backlight is powered on, wait for 3-5s. The green light flashes rapidly (If it's not flash mode, press the Control Box Switch Button for 6-10s). Enter the add device interface. It automatically shows "Devices to be added". Then press "Go to add". If the devices don't appear automatically, then you need to add it manually.

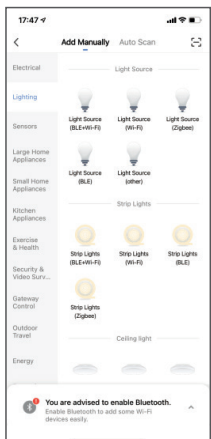
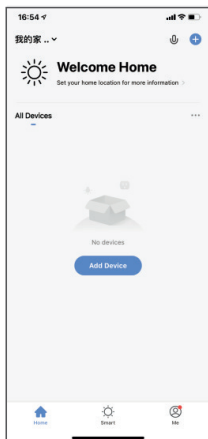


2. Enter your Wi-Fi Password and press “Next” to add advice. Once connected, the App will prompt you to press “Done”.



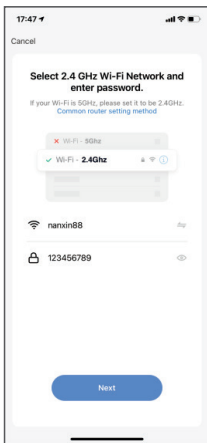
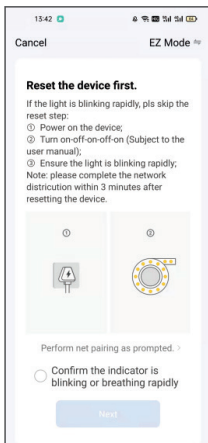
QUICK MODE CONFIGURATION

1. Ensure that quick mode configuration is initiated:
The indicator light blinks green rapidly (twice per second). If it blinks green slowly (once every 3 seconds), press and hold the Switch Button on the control box for 6-10 seconds to make the indicator light enter the flash state, and then connect.
2. Tap the icon "+" at the top of the light, choose any device type, and enter "Add Manually".

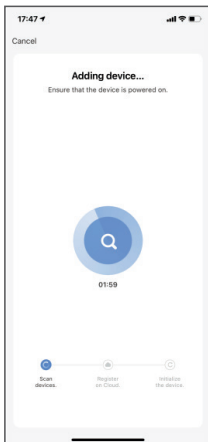


3. Follow up the in-app instruction to connect the Smart TV Back-light to your Wi-Fi network.
4. Enter your Wi-Fi Password and press "Next" to add device. Once connected, the red light will change from blinking to always on.

Please remember to choose the fast blinking option.

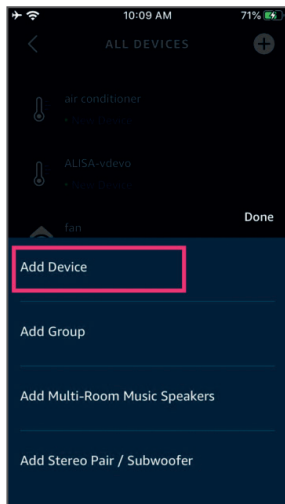


5. Once connection finished, the App will prompt you to press "Done".
6. Now you can control Smart Sync TV Backlight through Bneta IoT App, and the device will be added to the "Device List".

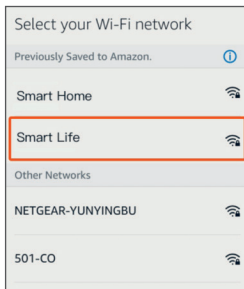
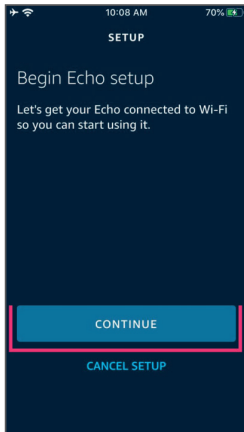


CONNECT TO AMAZON ALEXA

- 1. Complete product networking configuration in the BNETA App:**
Complete the device's networking configuration according to the prompts in the App. Note: In the App, change the name of the device to an easily identifiable name such as Alexa; names are usually in English, such as "TV Backlight".
- 2. Configure the Amazon Echo device. If you have already configured Amazon Echo, you can skip this step. The following instructions are based on the iOS client.**



- Make sure your Amazon Echo device is powered on and connected to a Wi-Fi network.
- Open the Alexa app on your phone. After successful login, tap on the menu in the upper left corner of the Home page, select "Settings" and tap "Set Up A New Device" to set up the Amazon Echo.



- Choose your Amazon Echo device type and language for connecting. Press and hold the small dot on the device until the light turns yellow. Then tap “Continue” to connect to the hotspot.
- After connecting to the Amazon Echo hotspot, return to the page. At this point, the connection is successful. Tap “Continue” to proceed to the next step. Choose a Wi-Fi network to connect to. Amazon Echo will take a few minutes to try to connect to the network.
- After the network connection is successful, Tap “Continue.” An introduction video will appear. After the video ends, Tap “Continue” to jump to the Alexa Home page. The Amazon Echo’s configuration process has now been completed.


3. Key Step - Link Skills:

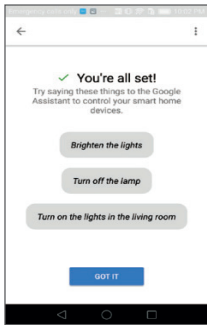
- Tap on "Skills" in the Alexa app menu.
- Then search for "BNETA IoT". Tap "Enable" to enable the Skill.
- Enter the BNETA IoT App account and password, then tap "Link Now" to link your BNETA IoT account to enable the Skill. Now you can start your smart home journey.

CONNECT TO GOOGLE HOME

1. Launch the Google Home App and make sure Google Home speaker is installed. If not, please follow Google Home speaker installation instruction to complete the installation.

Once Google Home is installed, in the upper left corner of App

2. Home page, Pressing  button to show App menu. Then press "Home Control" in the menu.



3. After successfully linking your account, in the Google Home App you can see all your smart devices from your BNETA IoT App account. You can assign rooms for each device.

4. Now you can use Google Home to control your smart device, you can say like.

Why is there is no connection or any response after plugging in?

- Please check whether your source resolution is supported by HDMI 2.0 or HDMI 2.1 (there are two versions of our products, the default is HDMI 2.0), otherwise it will not be supported. If you need HDMI version 2.1, please contact our sales department.
- Check the HDMI cable and connection with input port.
- Try resetting the device power as the the sequence: TV HDMI synch box and lighting kits HD sources (such as PS4/ PS5/P-C/TV boxes).
- Please contact us immediately so that we can assist you.

Why doesn't the colour of the light match the colour of the TV screen?

- Check the direction of the LED strips are attached to the back of the TV. The location of the first strip must be at the location of the red arrow and clockwise. In the meantime, please contact us so that we can assist you with a solution.

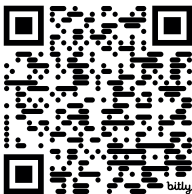
How do I connect a smart light strip to multiple mobile apps?

- You can enter the App, click "Profile"—"Device Sharing" to share device to others. Note, the other person must also have an App account.

BNETA IoT

Immersion TV Backlight with HDMI Sync Box

K90



Download **BNETA IoT** free App from
App Store or Google Play.



BNETA International

sales@bnet.co.za | www.bnet.co.za